



# GMT MONTHLY MEMBERSHIP PROGRESS REPORT

Results as of: 2/29/2024

Multiple District 325

LOCATION: NEPAL

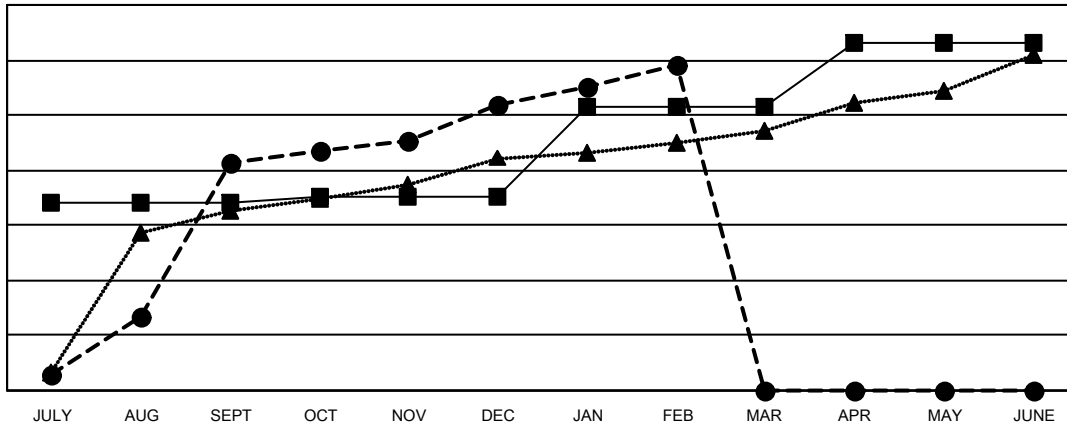
GMT: OPEN

GMT CA 6 - S

Clubs			
RESULTS FOR 2023-2024			
QUARTER	NEW CLUB GOAL	NEW CLUBS	DROPPED CLUBS
JULY/AUG/SEPT	136	166	36
OCT/NOV/DEC	5	41	120
JAN/FEB/MAR	65	30	38
APR/MAY/JUNE	47	0	0

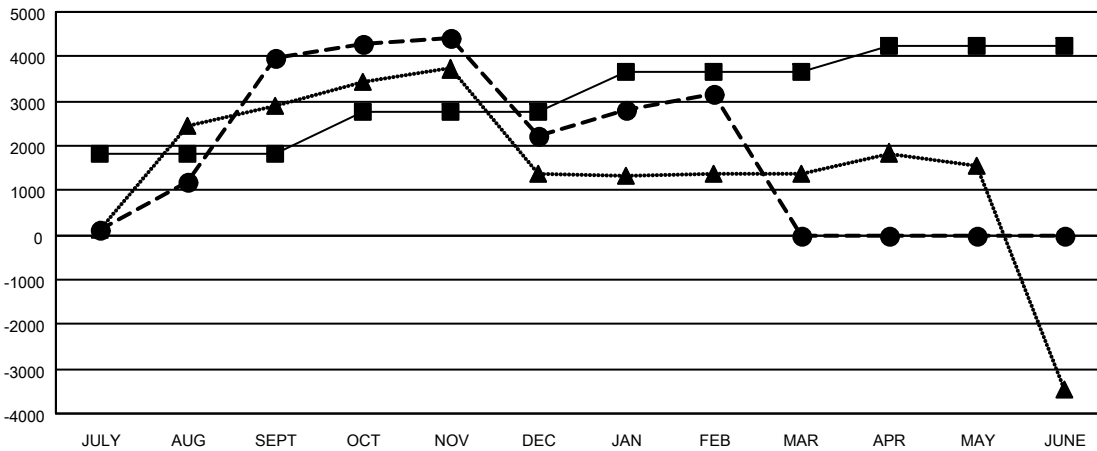
Members			
RESULTS FOR 2023-2024			
QUARTER	MEMBER GROWTH NET GOAL	MEMBER GROWTH ACTUAL	DROPPED MEMBERS ACTUAL (including transfers)
JULY/AUG/SEPT	1,804	6,399	2,198
OCT/NOV/DEC	957	2,537	4,218
JAN/FEB/MAR	879	2,197	1,078
APR/MAY/JUNE	615	0	0

GOALS AND ACTUAL NEW CLUBS CUMULATIVE



- - CURRENT YEAR GOALS FOR NEW CLUBS
- - CURRENT YEAR ACTUAL NEW CLUBS
- ▲ - LAST YEAR ACTUAL NEW CLUBS

GOALS AND ACTUAL MEMBERS CUMULATIVE



- - MEMBER GROWTH NET GOAL
- - MEMBER GROWTH ACTUAL
- ▲ - LAST YEAR MEMBERSHIP ACTUAL

DROPPED CLUBS: 194	1300 CLUBS OF 2076 ADDED 1 OR MORE NEW MEMBERS	<b>GENDER DISTRIBUTION</b>
		MALE 30,094 (68.89%)
		FEMALE 13,591 (31.11%)
<b>DROPPED MEMBERS</b>	<a href="#">CLICK HERE FOR CUMULATIVE MEMBERSHIP DATA</a>	TOTAL FAMILY UNIT MEMBERS 31,863
DECEASED 30		FAMILY MEMBERS PAYING HALF DUES 22,339
CLUB CANCELLED 2,853		
OTHER 4,611		
<b>TOTAL 7,494</b>		